



YBN UNIVERSITY

Established by the Act of Government of Jharkhand Act 15, 2017
Gazette Notification No. 505, Dated 17th July 2017
As per Section 2(f) of UGC Act. 1956



RAJAUlatu, NAMKUM, RANCHI, JHARKHAND-834010



YBN UNIVERSITY

Established by the Act of Government of Jharkhand Act 15, 2017
Gazette Notification No. 505, Dated 17th July 2017
As per Section 2(f) of UGC Act. 1956

Human Physiology

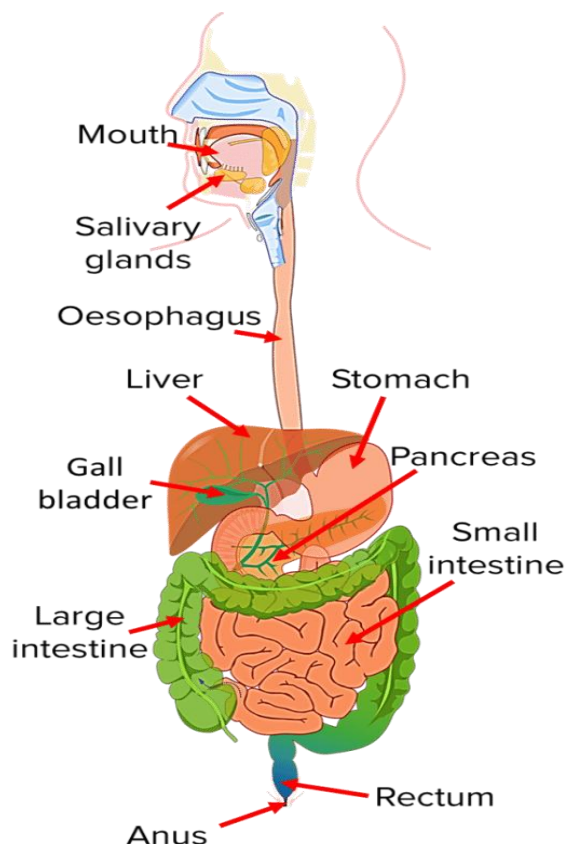
UNIT III – INTRODUCTIVE REGURAL COURS (IRC)

By

Dr. Abha Kumari

Food and Nutrition , YBN University, Ranchi Jharkhand

Human digestive system, system used in the human body for the process of digestion. The human digestive system consists primarily of the digestive tract, or the series of structures and organs through which food and liquids pass during their processing into forms that can be absorbed into the bloodstream. The system also consists of the structures through which wastes pass in the process of elimination and of organs that contribute juices necessary for the digestive process.



In order to function properly, the human body requires nutrients. Some such nutrients serve as raw materials for the synthesis of cellular materials, while others help regulate chemical reactions or, upon oxidation, yield energy. Many nutrients, however, are in a form that is unsuitable for immediate use by the body; to be useful, they must undergo physical and chemical changes, which are facilitated by digestion.



YBN UNIVERSITY

Established by the Act of Government of Jharkhand Act 15, 2017
Gazette Notification No. 505, Dated 17th July 2017
As per Section 2(f) of UGC Act. 1956

Name of digestive organs: -

- Mouth
- Pharynx
- Oesophagus
- Stomach
- Small intestine
- Duodenum
- Jejunum
- Large intestine
- Cecum

Mouth and oral structures

Human mouth Anterior view of the oral cavity. Little digestion of food actually takes place in the mouth. However, through the process of mastication, or chewing, food is prepared in the mouth for transport through the upper digestive tract into the stomach and small intestine, where the principal digestive processes take place. Chewing is the first mechanical process to which food is subjected. Movements of the lower jaw in chewing are brought about by the muscles of mastication (the masseter, the temporal, the medial and lateral pterygoids, and the buccinator). The sensitivity of the periodontal membrane that surrounds and supports the teeth, rather than the power of the muscles of mastication, determines the force of the bite.

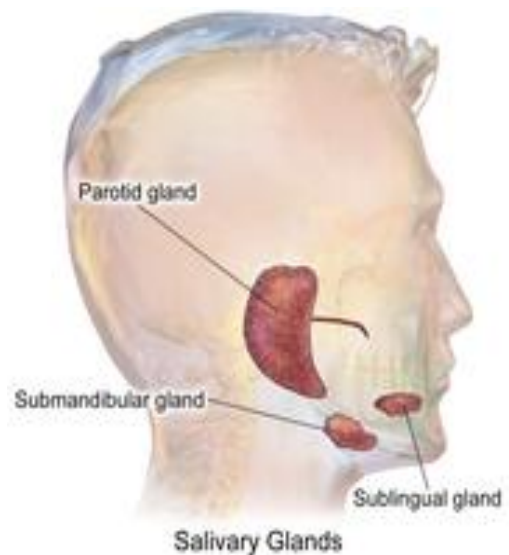
The mouth is the first part of the upper gastrointestinal tract and is equipped with several structures that begin the first processes of digestion. These include salivary glands, teeth and the tongue. The mouth consists of two regions; the vestibule and the oral cavity proper. The vestibule is the area between the teeth, lips and cheeks, and the rest is the oral cavity proper. Most of the oral cavity is



YBN UNIVERSITY

Established by the Act of Government of Jharkhand Act 15, 2017
Gazette Notification No. 505, Dated 17th July 2017
As per Section 2(f) of UGC Act. 1956

lined with oral mucosa, a mucous membrane that produces a lubricating mucus, of which only a small amount is needed. Mucous membranes vary in structure in the different regions of the body but they all produce a lubricating mucus, which is either secreted by surface cells or more usually by underlying glands. The mucous membrane in the mouth continues as the thin mucosa which lines the bases of the teeth. The main component of mucus is a glycoprotein called mucin and the type secreted varies according to the region involved. Mucin is viscous, clear, and clinging. Underlying the mucous membrane in the mouth is a thin layer of smooth muscle tissue and the loose connection to the membrane gives it its great elasticity. It covers the cheeks, inner surfaces of the lips, and floor of the mouth, and the mucin produced is highly protective against tooth decay.



Salivary glands

There are three pairs of main salivary glands and between 800 and 1,000 minor salivary glands, all of which mainly serve the digestive process, and also play an important role in the maintenance of dental health and general mouth lubrication, without which speech would be impossible.^[11] The main glands are all exocrine glands, secreting via ducts. All of these glands terminate in the mouth. The largest of these are the parotid glands—their secretion is mainly serous. The next pair are underneath the jaw, the submandibular glands, these produce both serous fluid and mucus. The serous fluid is produced by serous glands in these salivary glands which also produce lingual lipase. They produce about 70% of the oral cavity saliva. The third pair are the sublingual glands located underneath the tongue and their secretion is mainly mucous with a small percentage of saliva.

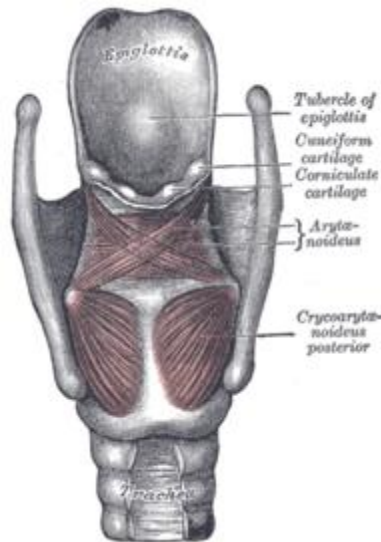
Saliva



YBN UNIVERSITY

Established by the Act of Government of Jharkhand Act 15, 2017
Gazette Notification No. 505, Dated 17th July 2017
As per Section 2(f) of UGC Act. 1956

Saliva moistens and softens chewing action of the teeth, smooth bolus. The bolus is lubrication provided by the mouth into the esophagus. Also saliva of the digestive enzymes starts to work on breaking it down into the



food, and along with the transforms the food into a further helped by the saliva in its passage from the of importance is the presence in amylase and lipase. Amylase the starch in carbohydrates,

simple sugars of maltose and dextrose that can be further broken down in the small intestine. Saliva in the mouth can account for 30% of this initial starch digestion. Lipase starts to work on breaking down fats. Lipase is further produced in the pancreas where it is released to continue this digestion of fats. The presence of salivary lipase is of prime importance in young babies whose pancreatic lipase has yet to be developed.

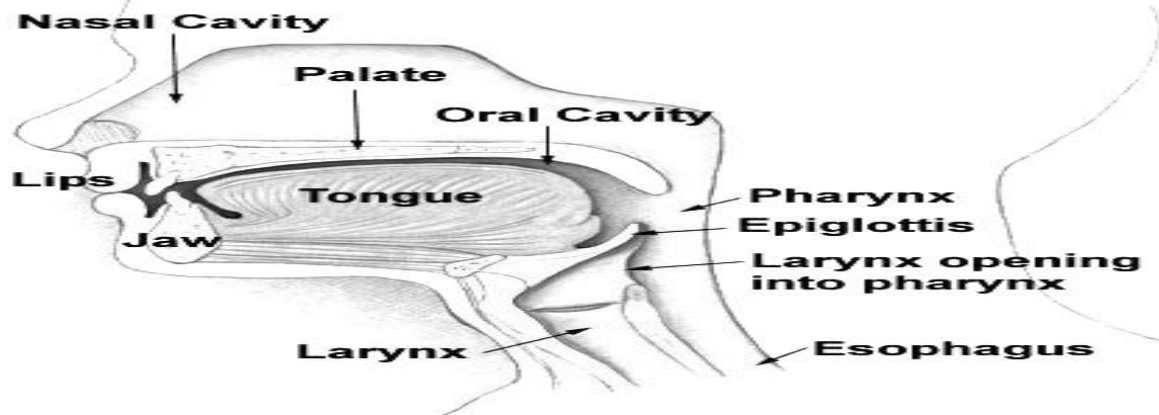
EPIGLOTTIS

The epiglottis is a flap of elastic cartilage attached to the entrance of the larynx. It is covered with a mucous membrane and there are taste buds on its lingual surface which faces into the mouth.



YBN UNIVERSITY

Established by the Act of Government of Jharkhand Act 15, 2017
Gazette Notification No. 505, Dated 17th July 2017
As per Section 2(f) of UGC Act. 1956



Its laryngeal surface faces into the larynx. The epiglottis functions to guard the entrance of the [glottis](#), the opening between the [vocal folds](#). It is normally pointed upward during breathing with its underside functioning as part of the pharynx, but during swallowing, the epiglottis folds down to a more horizontal position, with its upper side functioning as part of the pharynx. In this manner it prevents food from going into the trachea and instead directs it to the esophagus, which is behind. During swallowing, the backward motion of the tongue forces the epiglottis over the glottis' opening to prevent any food that is being swallowed from entering the larynx which leads to the lungs; the larynx is also pulled upwards to assist this process. Stimulation of the larynx by ingested matter produces a strong [cough reflex](#) in order to protect the lungs

Pharynx

The [pharynx](#) is a part of the [conducting zone](#) of the [respiratory system](#) and also a part of the digestive system. It is the part of the throat immediately behind the [nasal cavity](#) at the back of the mouth and above the esophagus and [larynx](#). The pharynx is made up of three parts. The lower two parts—the [oropharynx](#) and the [laryngopharynx](#) are involved in the digestive system. The laryngopharynx connects to the esophagus and it serves as a passageway for both air and food. Air enters the larynx anteriorly but anything swallowed has priority and the passage of air is temporarily blocked. The pharynx is innervated by the [pharyngeal plexus of the vagus](#)



YBN UNIVERSITY

Established by the Act of Government of Jharkhand Act 15, 2017
Gazette Notification No. 505, Dated 17th July 2017
As per Section 2(f) of UGC Act. 1956

nerve.^{[10]:1465} Muscles in the pharynx push the food into the esophagus. The pharynx joins the esophagus at the oesophageal inlet which is located behind the cricoid cartilage.

Esophagus

Esophagus shown in yellow passing behind the trachea and the heart

The esophagus, commonly known as the food pipe or gullet, consists of a muscular tube through which food passes from the pharynx to the stomach. The esophagus is continuous with the laryngopharynx. It passes through the posterior mediastinum in the thorax and enters the stomach through a hole in the thoracic diaphragm—the esophageal hiatus, at the level of the tenth thoracic vertebra (T10). Its length averages 25 cm, varying with an individual's height. It is divided into cervical, thoracic and abdominal parts. The pharynx joins the esophagus at the esophageal inlet which is behind the cricoid cartilage.

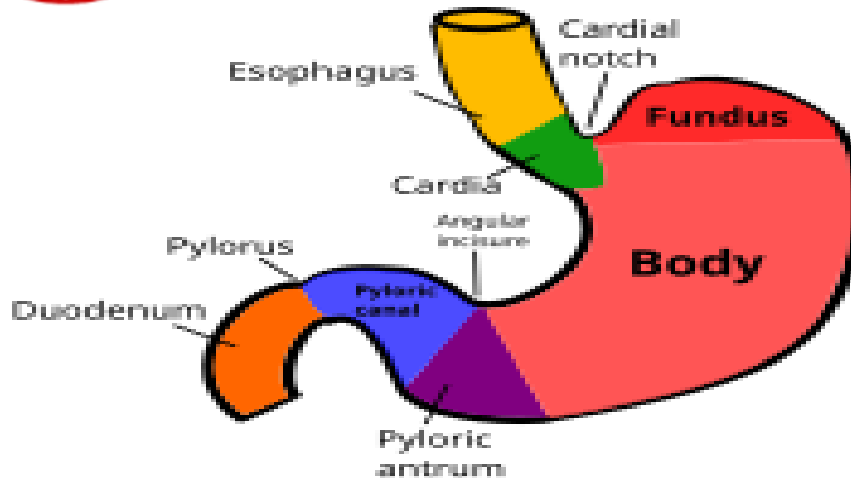
At rest the esophagus is closed at both ends, by the upper and lower esophageal sphincters. The opening of the upper sphincter is triggered by the swallowing reflex so that food is allowed through. The sphincter also serves to prevent back flow from the esophagus into the pharynx. The esophagus has a mucous membrane and the epithelium which has a protective function is continuously replaced due to the volume of food that passes inside the esophagus. During swallowing, food passes from the mouth through the pharynx into the esophagus. The epiglottis folds down to a more horizontal position to direct the food into the esophagus, and away from the trachea.

Stomach



YBN UNIVERSITY

Established by the Act of Government of Jharkhand Act 15, 2017
Gazette Notification No. 505, Dated 17th July 2017
As per Section 2(f) of UGC Act. 1956



The stomach is a major organ of the gastrointestinal tract and digestive system. It is a consistently J-shaped organ joined to the esophagus at its upper end and to the duodenum at its lower end. Gastric acid (informally *gastric juice*), produced in the stomach plays a vital role in the digestive process, and mainly contains hydrochloric acid and sodium chloride. A peptide hormone, gastrin, produced by G cells in the gastric glands, stimulates the production of gastric juice which activates the digestive enzymes. Pepsinogen is a precursor enzyme (zymogen) produced by the gastric chief cells, and gastric acid activates this to the enzyme pepsin which begins the digestion of proteins. As these two chemicals would damage the stomach wall, mucus is secreted by innumerable gastric glands in the stomach, to provide a slimy protective layer against the damaging effects of the chemicals on the inner layers of the stomach.

At the same time that protein is being digested, mechanical churning occurs through the action of peristalsis, waves of muscular contractions that move along the stomach wall. This allows the mass of food to further mix with the digestive enzymes. Gastric lipase secreted by the chief cells in the fundic glands in the gastric mucosa of the stomach, is an acidic lipase, in contrast with the alkaline pancreatic lipase. This breaks down fats to some degree though is not as efficient as the pancreatic lipase.

Spleen



YBN UNIVERSITY

Established by the Act of Government of Jharkhand Act 15, 2017
Gazette Notification No. 505, Dated 17th July 2017
As per Section 2(f) of UGC Act. 1956

The spleen is the largest lymphoid organ in the body but has other functions. It breaks down both red and white blood cells that are *spent*. This is why it is sometimes known as the 'graveyard of red blood cells'. A product of this *digestion* is the pigment bilirubin, which is sent to the liver and secreted in the bile. Another product is iron, which is used in the formation of new blood cells in the bone marrow.^[5] Medicine treats the spleen solely as belonging to the lymphatic system, though it is acknowledged that the full range of its important functions is not yet understood.

Liver

The liver is the second largest organ (after the skin) and is an accessory digestive gland which plays a role in the body's metabolism. The liver has many functions some of which are important to digestion. The liver can detoxify various metabolites; synthesise proteins and produce biochemicals needed for digestion. It regulates the storage of glycogen which it can form from glucose (glycogenesis). The liver can also synthesise glucose from certain amino acids. Its digestive functions are largely involved with the breaking down of carbohydrates. It also maintains protein metabolism in its synthesis and degradation. In lipid metabolism it synthesises cholesterol. Fats are also produced in the process of lipogenesis. The liver synthesises the bulk of lipoproteins. The liver is located in the upper right quadrant of the abdomen and below the diaphragm to which it is attached at one part, the bare area of the liver. This is to the right of the stomach and it overlies the gall bladder. The liver synthesises bile acids and lecithin to promote the digestion of fat.

Bile

Bile produced by the liver is made up of water (97%), bile salts, mucus and pigments, 1% fats and inorganic salts. Bilirubin is its major pigment. Bile acts partly as a surfactant which lowers the surface tension between either two liquids or a solid and a liquid and helps to emulsify the fats in the chyme. Food fat is dispersed by the action of bile into smaller units called micelles. The breaking down into micelles creates a much larger surface area for the pancreatic enzyme, lipase to work on. Lipase digests the triglycerides which are broken down into two fatty acids and a monoglyceride. These are then absorbed by villi on the intestinal wall. If fats are not absorbed in



YBN UNIVERSITY

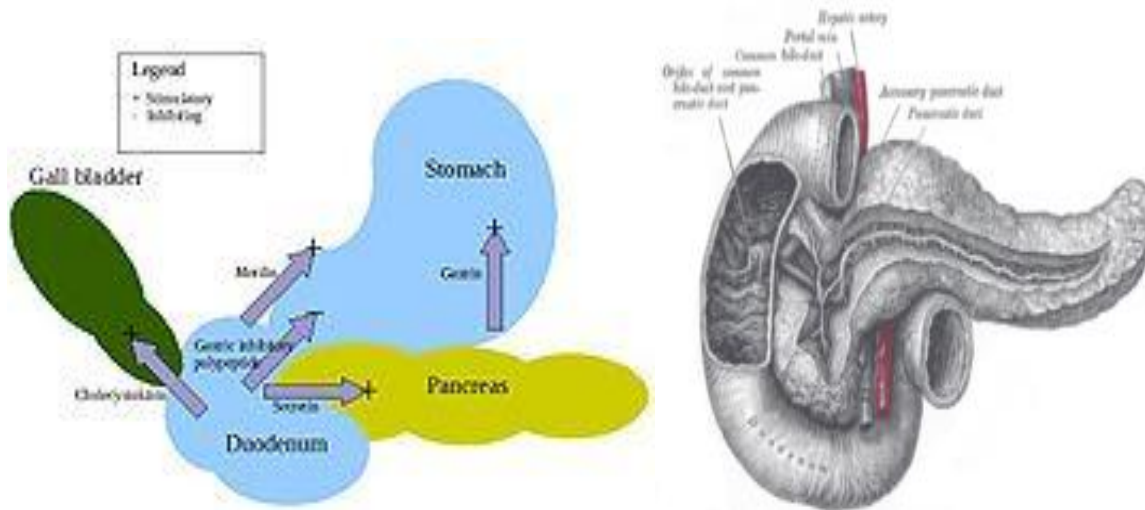
Established by the Act of Government of Jharkhand Act 15, 2017
Gazette Notification No. 505, Dated 17th July 2017
As per Section 2(f) of UGC Act. 1956

this way in the small intestine problems can arise later in the large intestine which is not equipped to absorb fats. Bile also helps in the absorption of vitamin K from the diet. Bile is collected and delivered through the common hepatic duct. This duct joins with the cystic duct to connect in a common bile duct with the gallbladder. Bile is stored in the gallbladder for release when food is discharged into the duodenum and also after a few hours.

Gallbladder

The [gallbladder](#) is a hollow part of the [biliary tract](#) that sits just beneath the liver, with the gallbladder body resting in a small depression. It is a small organ where the bile produced by the liver is stored, before being released into the small intestine. Bile flows from the liver through the [bile ducts](#) and into the gall bladder for storage. The bile is released in response to [cholecystinin](#) (CCK), a peptide hormone released from the duodenum. The production of CCK (by endocrine cells of the duodenum) is stimulated by the presence of fat in the duodenum.

Pancreas



The pancreas is a major organ functioning as an accessory digestive gland in the digestive system. It is both an endocrine gland and an exocrine gland.^[28] The endocrine part secretes insulin when the blood sugar becomes high; insulin moves glucose from the blood into the muscles and other



YBN UNIVERSITY

Established by the Act of Government of Jharkhand Act 15, 2017
Gazette Notification No. 505, Dated 17th July 2017
As per Section 2(f) of UGC Act. 1956

tissues for use as energy. The endocrine part releases glucagon when the blood sugar is low; glucagon allows stored sugar to be broken down into glucose by the liver in order to re-balance the sugar levels. The pancreas produces and releases important digestive enzymes in the pancreatic juice that it delivers to the duodenum.^[24] The pancreas lies below and at the back of the stomach. It connects to the duodenum via the pancreatic duct which it joins near to the bile duct's connection where both the bile and pancreatic juice can act on the chyme that is released from the stomach into the duodenum. Aqueous pancreatic secretions from pancreatic duct cells contain bicarbonate ions which are alkaline and help with the bile to neutralise the acidic chyme that is churned out by the stomach.

The pancreas is also the main source of enzymes for the digestion of fats and proteins. Some of these are released in response to the production of cholecystokinin in the duodenum. (The enzymes that digest polysaccharides, by contrast, are primarily produced by the walls of the intestines.) The cells are filled with secretory granules containing the precursor digestive enzymes. The major proteases, the pancreatic enzymes which work on proteins, are trypsinogen and chymotrypsinogen. Elastase is also produced. Smaller amounts of lipase and amylase are secreted. The pancreas also secretes phospholipase A₂, lysophospholipase, and cholesterol esterase. The precursor zymogens, are inactive variants of the enzymes; which avoids the onset of pancreatitis caused by autodegradation. Once released in the intestine, the enzyme enteropeptidase present in the intestinal mucosa activates trypsinogen by cleaving it to form trypsin; further cleavage results in chymotrypsin.

Lower gastrointestinal tract

The lower gastrointestinal tract (GI), includes the small intestine and all of the large intestine.^[29] The intestine is also called the bowel or the gut. The lower GI starts at the pyloric sphincter of the stomach and finishes at the anus. The small intestine is subdivided into the duodenum, the jejunum and the ileum. The cecum marks the division between the small and large intestine. The large intestine includes the rectum and anal canal.

Small Intestine



YBN UNIVERSITY

Established by the Act of Government of Jharkhand Act 15, 2017
Gazette Notification No. 505, Dated 17th July 2017
As per Section 2(f) of UGC Act. 1956

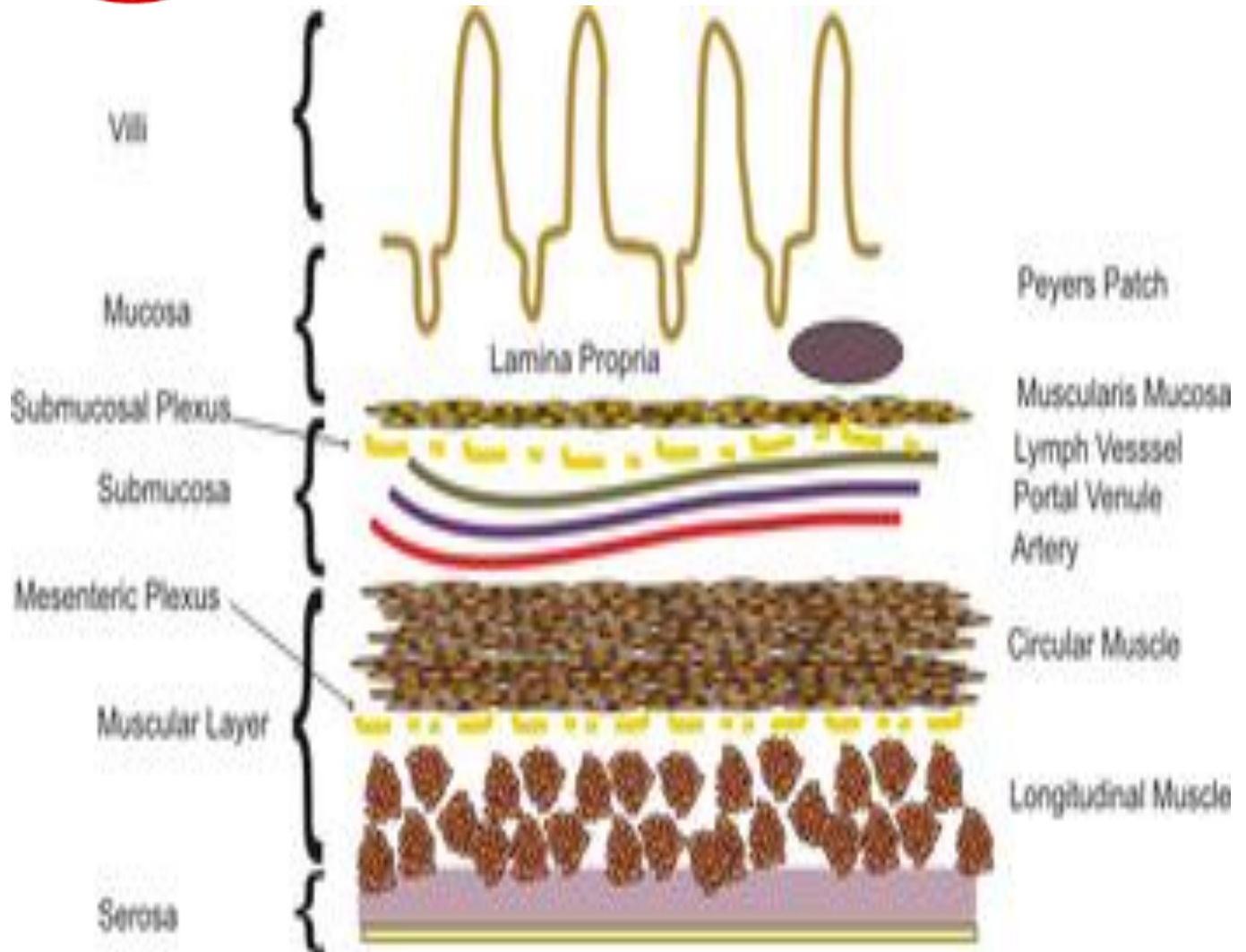
Partially digested food starts to arrive in the small intestine as semi-liquid chyme, one hour after it is eaten. The stomach is half empty after an average of 1.2 hours. After four or five hours the stomach has emptied.

In the small intestine, the pH becomes crucial; it needs to be finely balanced in order to activate digestive enzymes. The chyme is very acidic, with a low pH, having been released from the stomach and needs to be made much more alkaline. This is achieved in the **duodenum** by the addition of bile from the gall bladder combined with the bicarbonate secretions from the pancreatic duct and also from secretions of bicarbonate-rich mucus from duodenal glands known as Brunner's glands. The chyme arrives in the intestines having been released from the stomach through the opening of the pyloric sphincter. The resulting alkaline fluid mix neutralises the gastric acid which would damage the lining of the intestine. The mucus component lubricates the walls of the intestine.



YBN UNIVERSITY

Established by the Act of Government of Jharkhand Act 15, 2017
Gazette Notification No. 505, Dated 17th July 2017
As per Section 2(f) of UGC Act. 1956



Frank Bouwhrey M.D. 2008

When the digested food particles are reduced enough in size and composition, they can be absorbed by the intestinal wall and carried to the bloodstream. The first receptacle for this chyme is the duodenal bulb. From here it passes into the first of the three sections of the small intestine, the duodenum (the next section is the **jejunum** and the third is the **ileum**). The duodenum is the first and shortest section of the small intestine. It is a hollow, jointed C-shaped tube connecting the stomach to the jejunum. It starts at the duodenal bulb and ends at the suspensory muscle of duodenum. The attachment of the suspensory muscle to the diaphragm is thought to help the passage of food by making a wider angle at its attachment.



YBN UNIVERSITY

Established by the Act of Government of Jharkhand Act 15, 2017
Gazette Notification No. 505, Dated 17th July 2017
As per Section 2(f) of UGC Act. 1956

Cecum

The cecum is a pouch marking the division between the small intestine and the large intestine. It lies below the ileocecal valve in the lower right quadrant of the abdomen.^[33] The cecum receives chyme from the last part of the small intestine, the ileum, and connects to the ascending colon of the large intestine. At this junction there is a sphincter or valve, the ileocecal valve which slows the passage of chyme from the ileum, allowing further digestion. It is also the site of the appendix attachment.

Large intestine

Lower GI tract - Small intestine; Cecum; Large intestine

In the large intestine, the passage of the digesting food in the colon is a lot slower, taking from 30 to 40 hours until it is removed by defecation. The colon mainly serves as a site for the fermentation of digestible matter by the gut flora. The time taken varies considerably between individuals. The remaining semi-solid waste is termed feces and is removed by the coordinated contractions of the intestinal walls, termed peristalsis, which propels the excreta forward to reach the rectum and exit through the anus via defecation. The wall has an outer layer of longitudinal muscles, the taeniae coli, and an inner layer of circular muscles. The circular muscle keeps the material moving forward and also prevents any back flow of waste. Also of help in the action of peristalsis is the basal electrical rhythm that determines the frequency of contractions. The taeniae coli can be seen and are responsible for the bulges (haustra) present in the colon. Most parts of the GI tract are covered with serous membranes and have a mesentery.



YBN UNIVERSITY

Established by the Act of Government of Jharkhand Act 15, 2017
Gazette Notification No. 505, Dated 17th July 2017
As per Section 2(f) of UGC Act. 1956